

THE MAYBERRY[®]

OPTIONAL ELEVATION B



*Rendering is an artist's conception and is for illustrative purposes only.



ELEVATIONS

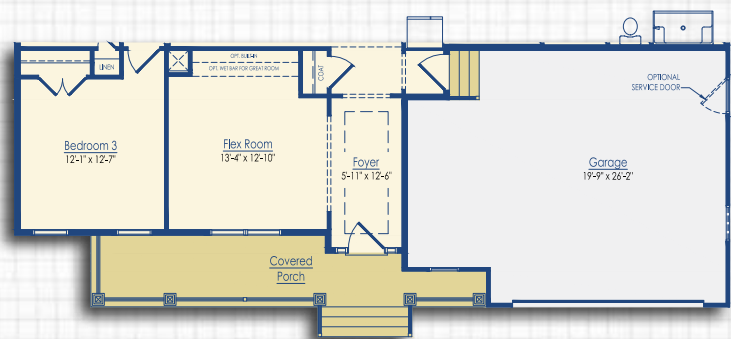
INCLUDED ELEVATION A



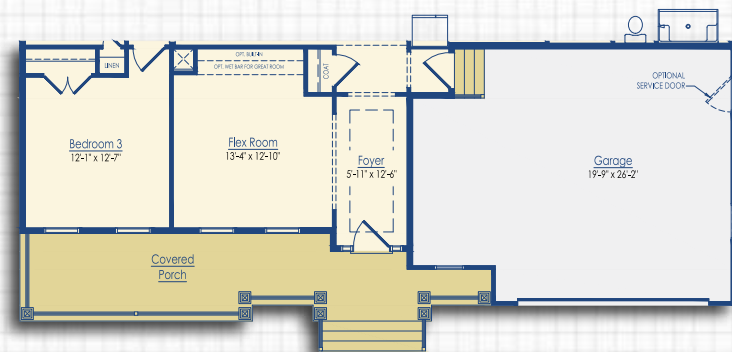
OPTIONAL ELEVATION B



OPTIONAL ELEVATION C



Optional Elevation B Front Porch



Optional Elevation C Front Porch

FLOOR PLAN



THE MAYBERRY

| | |
|----------------|---------------|
| Beds | 3 - 6 |
| Baths | 2 - 5.5 |
| Heated Sq. Ft. | 2,254 - 5,343 |
| Total Sq. Ft. | 2,926 - 6,816 |

*Floor plan dimensions are approximate

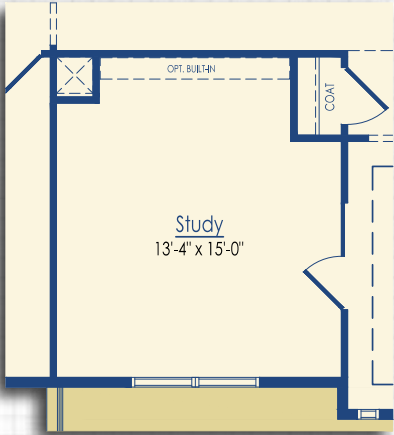
First Floor
Elevation A

FLEX ROOM OPTIONS

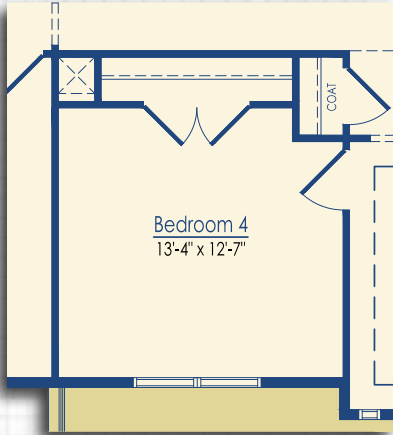
SQUARE FOOTAGE

Extended Dining Area +173

*Floor plan dimensions are approximate.



Optional Study



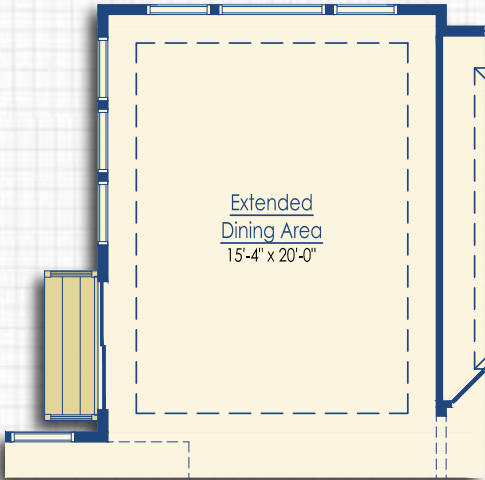
Optional Bedroom 4



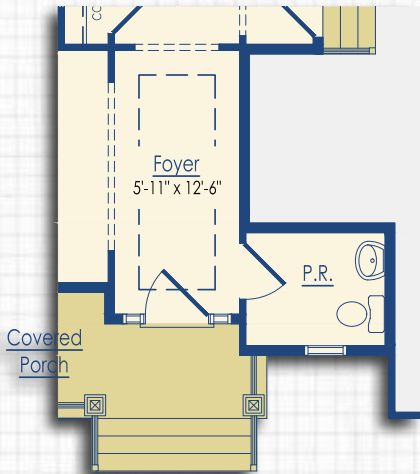
Optional Living/Dining Area



Optional Flex Room with
Optional Great Room Wet Bar



Optional Extended Dining Area



Optional Powder Room



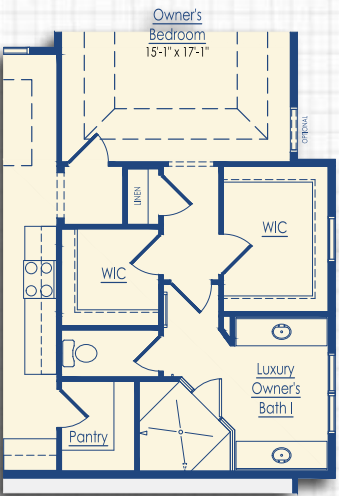
Optional Great Room
Pocket Door

OWNER'S SUITE OPTIONS

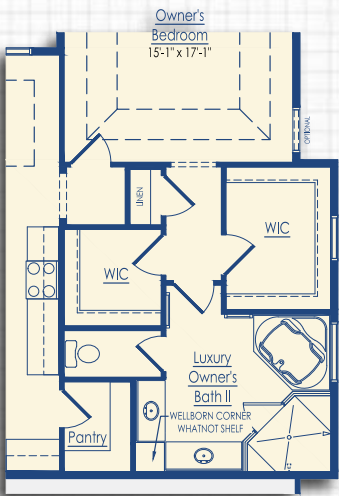
SQUARE FOOTAGE

| | |
|--------------------------|-----|
| Luxury Owner's Suite I | +53 |
| Luxury Owner's Suite II | +53 |
| Luxury Owner's Suite III | +51 |
| Luxury Owner's Suite IV | +51 |
| Sitting Area | +43 |

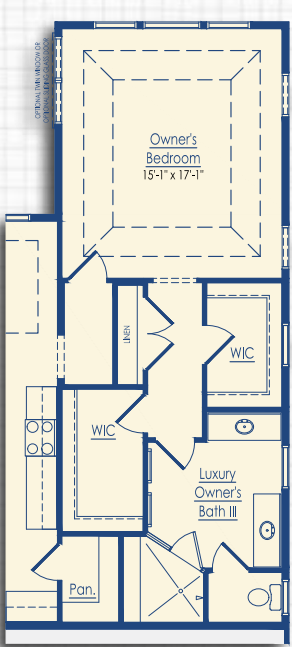
*Floor plan dimensions are approximate



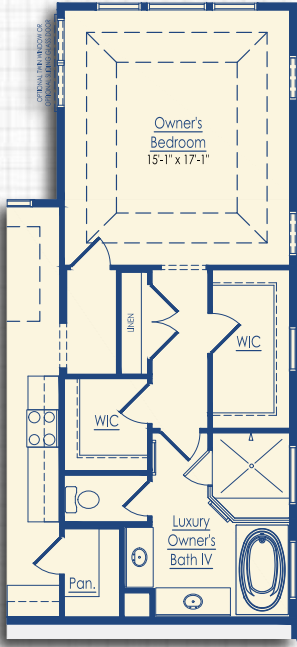
Optional Luxury Owner's Suite I



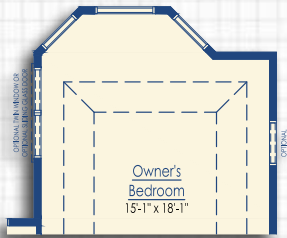
Optional Luxury Owner's Suite II



Optional Luxury Owner's Suite III



Optional Luxury Owner's Suite IV



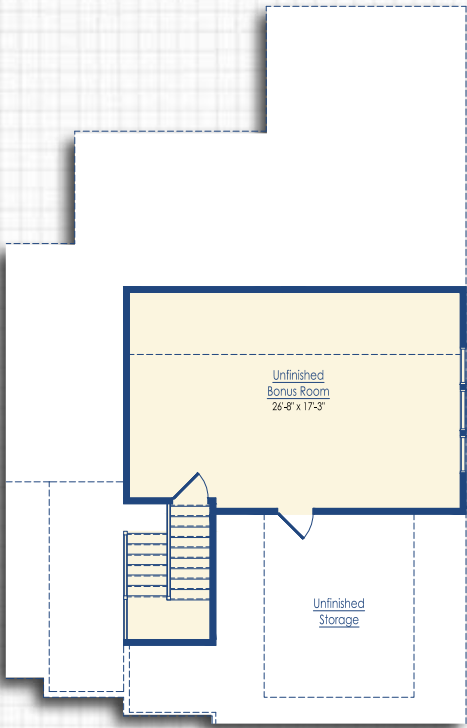
Optional Sitting Area

BONUS ROOM OPTIONS

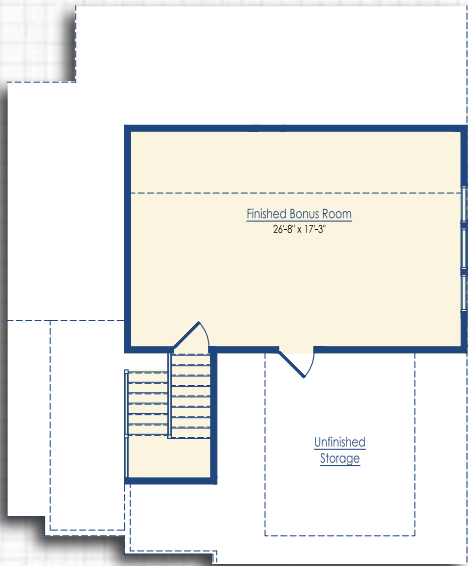
SQUARE FOOTAGE

| | |
|-----------------------|------|
| Unfinished Bonus Room | +568 |
| Finished Bonus Room | +571 |

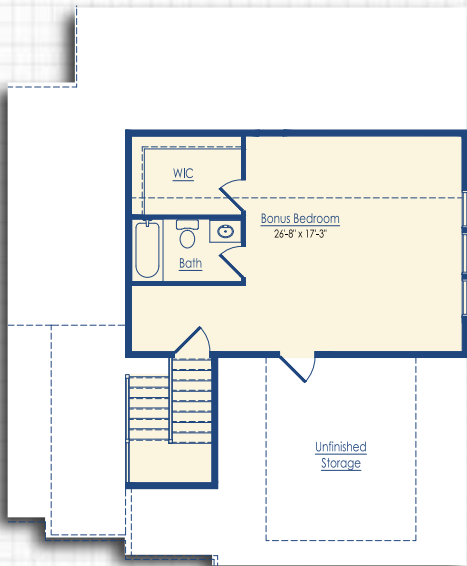
*Floor plan dimensions are approximate



Optional Unfinished Bonus Room



Optional Finished Bonus Room



Optional Bonus Room with Bath

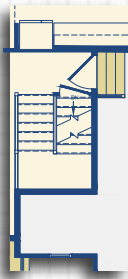
Stair Configurations



Basement Stairs



Bonus Room Stairs



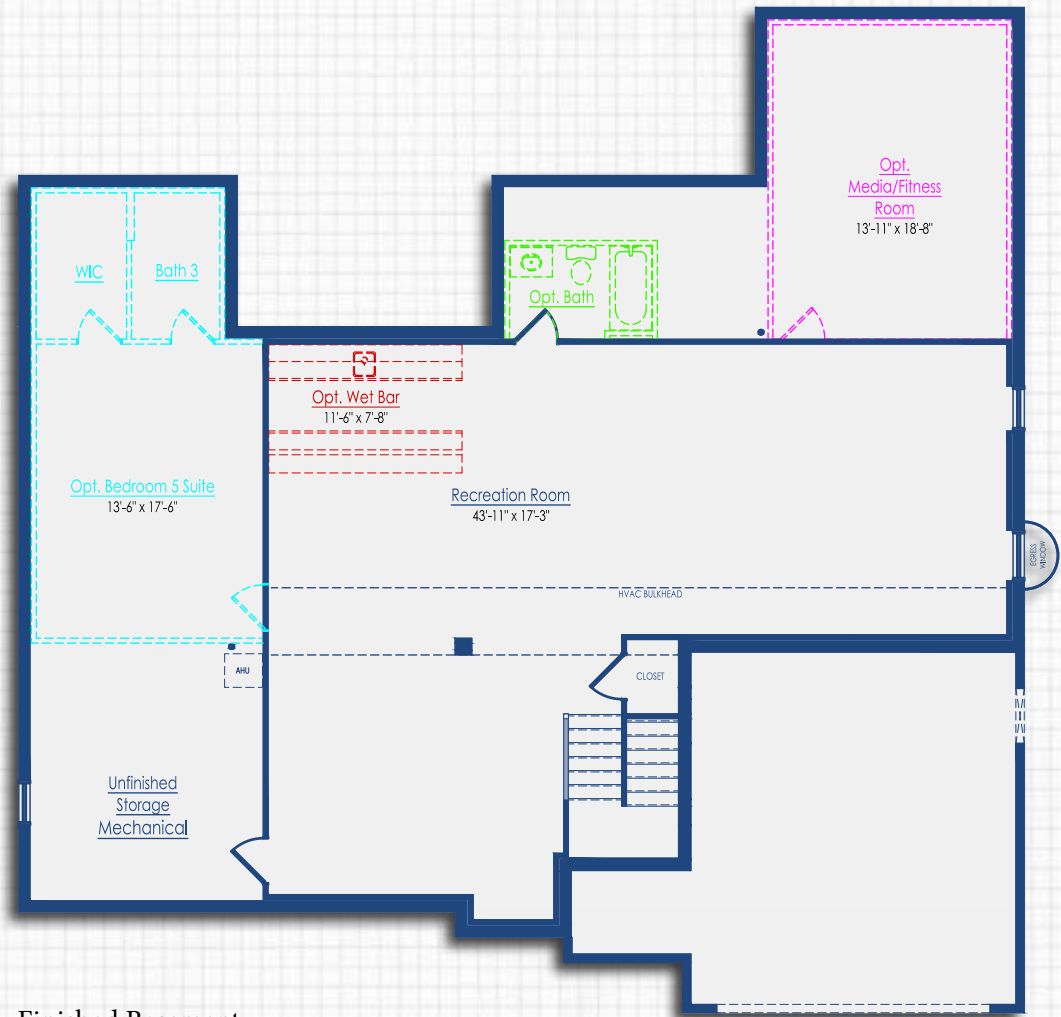
Basement & Bonus Room Stairs

BASEMENT OPTIONS

SQUARE FOOTAGE

| | |
|---------------------|-------|
| Finished Basement | +1447 |
| Unfinished Basement | +2277 |
| Powder Room | +42 |
| Bath | +57 |
| Bedroom 5 | +126 |
| Media Room | +309 |

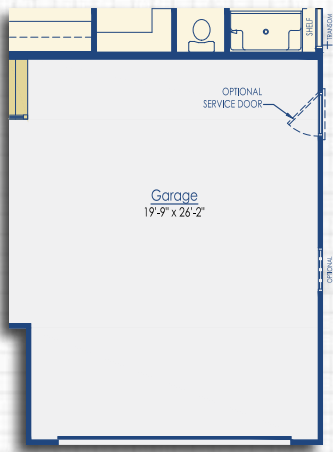
*Floor plan dimensions are approximate. Structural Extensions may affect size and layout of basement. See sales team for details.



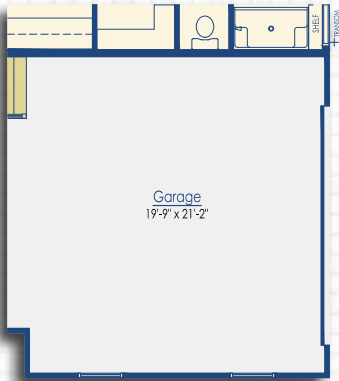
Optional Welled Exit

Finished Basement

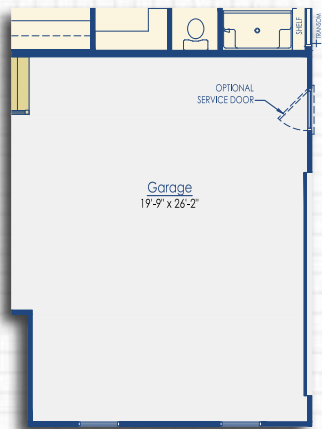
GARAGE OPTIONS



Optional 5' Garage Extension

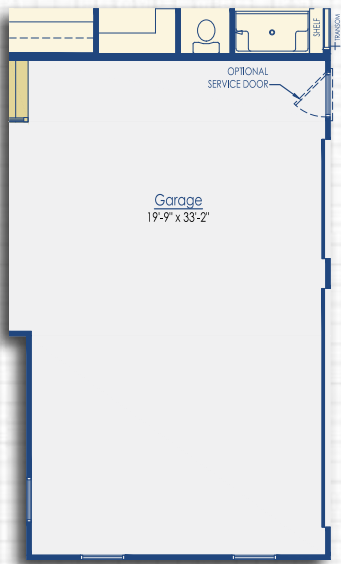


Optional Side Load Garage

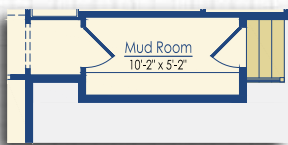


Opt Side Load Garage w/ 5FT Extension

Optional 5' Side Load Garage Extension



Optional 3- Car Side Load Garage



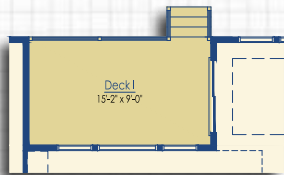
Optional Mud Room
*Only Available with 5' Garage Extension

| SQUARE FOOTAGE | |
|----------------------------------|------|
| 5' Garage Extension | +102 |
| 5' Side Load Garage Extension | +102 |
| 3-Car Side Load Garage Extension | +244 |
| Mud Room | +55 |

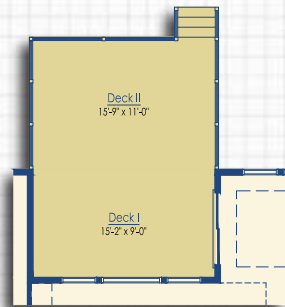
*Floor plan dimensions are approximate

DECK, & SCREENED PORCH OPTIONS

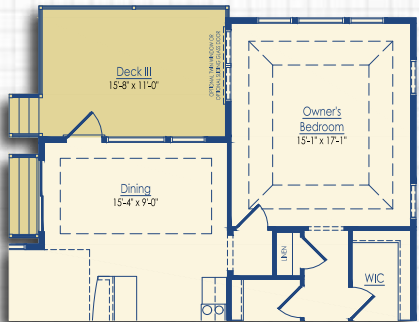
| SQUARE FOOTAGE | |
|--|------|
| Screen Porch I | +137 |
| Screen Porch II | +173 |
| *Floor plan dimensions are approximate | |



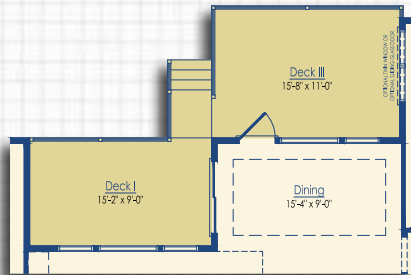
Optional Deck I



Optional Deck I &
Optional Deck II

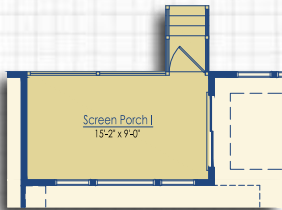


Optional Deck III

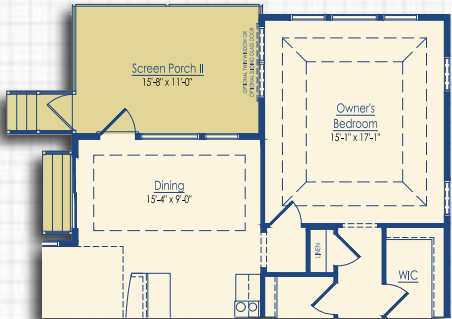


Optional Deck I & Optional Deck III

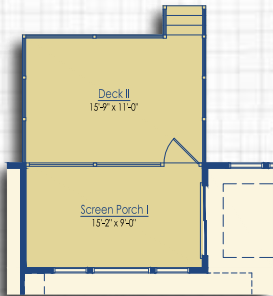
DECK, & SCREENED PORCH OPTIONS



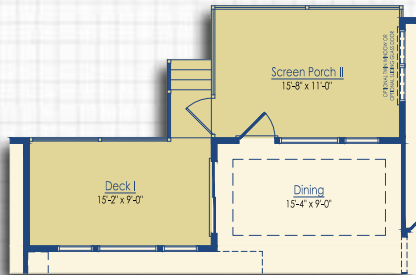
Optional Screen Porch I



Optional Screen Porch II



Optional Screen Porch I with Deck II



Optional Screen Porch II with Optional Deck I

KITCHEN OPTIONS



Included Kitchen has the following included features:

Select Cabinets, (1) Drawer Base with Side Mounted Drawer Slides, Small Crown, 4 or 6 Burner Free-Standing Range



Optional Gourmet Kitchen has the following features:

Premier Cabinets, Drawer Base Mix, Pull-Out Trash, High Crown, Finished Exposed Ends, Matching End Panels, Light Rail, and Glass Cabinet



Optional Professional's Kitchen has the following features:

Premier Cabinets, 36" Stainless Hood, Drawer Base Mix, Pull-Out Trash, High Crown, Finished Exposed Ends, Matching End Panels, Light Rail, Glass Cabinet, 36" Cooktop, Single & Double Wall Oven(s), Built-In Microwave



Optional Chef's Kitchen has the following features:

Premier Cabinets, Wood Hood, Drawer Base Mix, Pull-Out Trash, High Crown, Finished Exposed Ends, Matching End Panels, Light Rail, Glass Cabinet, 48" Monogram Refrigerator, 6-Burner Monogram Free-Standing Range

