



MILLSTONE



Get to know Millstone

WHY MILLSTONE?

Millstone is a vibrant community that perfectly balances convenience and comfort, located just minutes from town with easy access to major highways. Designed for an active and social lifestyle, Millstone offers an array of top-tier amenities, including a zero-entry pool, a state-of-the-art gym, and a welcoming amenity center where neighbors gather and connect. Families will love the playground and splash park, providing endless fun for children of all ages. With a warm, tight-knit community feel, Millstone is more than just a neighborhood—it's a place where friendships flourish and a true sense of belonging thrives.

HOW MANY HOMES ARE IN THE COMMUNITY?

We have 12 home sites in our first phase, and many more to come! Millstone will have a total of approximately 609 homes when completed.

WHAT FLOOR PLANS ARE OFFERED AT MILLSTONE?

Millstone offers a variety of single-family floor plans ranging from 1,971 heated sqft up to 6,280+ heated sqft



based on personalized selections. Each home offers something a little different, whether you're looking for a first floor or second floor primary suite, a tech nook for kids to do their homework at, or a place to entertain friends & family, we have the right home to fit your needs.

WHAT'S INCLUDED IN THE HOA BENEFITS AND WHAT ARE THE FEES?

Millstone's HOA dues are \$93/month and includes community pool and splash pad, community amenity center and clubhouse with fitness center, and a playground.

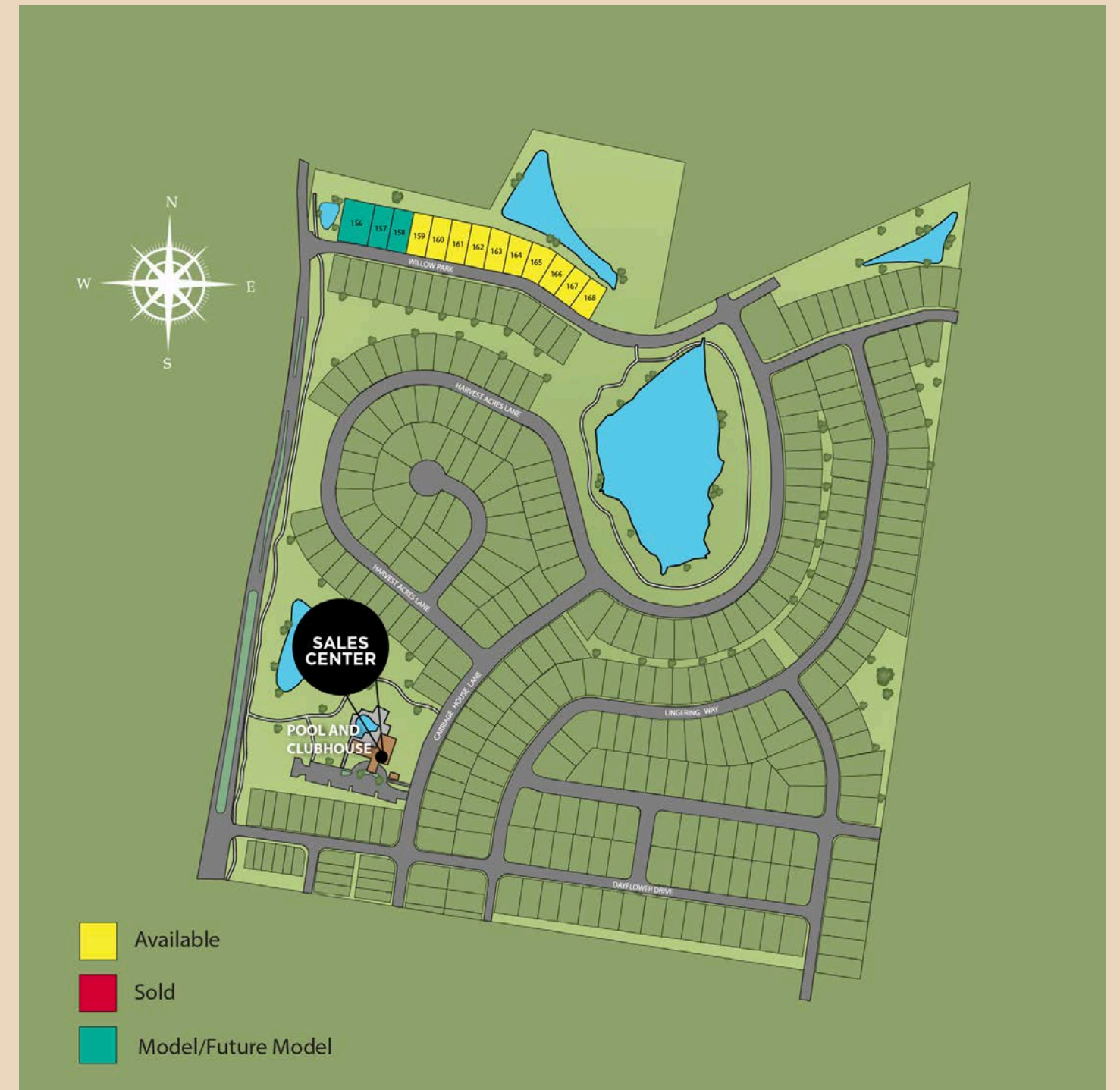
WHO ARE THE UTILITY COMPANIES?

Natural Gas: Piedmont Natural Gas
Electric: CEMC
Water: White House Utility District
Sewer: Hendersonville Utility District
Internet/Cable: AT&T or Comcast

WHAT SCHOOL DISTRICT IS MILLSTONE FARM LOCATED IN?

Millstone is located in the Sumner County School District.

Site Plan



The site plan is for illustrative purposes only and is subject to change without notice. Please contact the County Planning and Zoning Office for the most current information. Homesite premiums may apply.

Explore
EVERY DETAIL



Optional Elevation C

The Whimbrel

Beds: 3 - 6 | Baths: 2 - 4
Heated Sqft: 1,971 - 5,204 | Total Sqft: 2,544 - 6,812

*Floor plan dimensions are approximate. Floor plans have an extensive list of structural options for further personalization.



FIRST FLOOR
Included Elevation A

Explore
EVERY DETAIL



Optional Elevation B

The Cassidy

Beds: 4 - 6 | Baths: 3.5 - 7 |
Heated Sqft: 2,528 - 5,893 | Total Sqft: 3,491 - 7,839

*Floor plan dimensions are approximate. Floor plans have an extensive list of structural options for further personalization.



FIRST FLOOR
Included Elevation A

Uncover
THE POSSIBILITIES



Optional Modern Farmhouse

The Chatham

Beds: 3 - 6 | Baths: 2.5 - 5.5 |
Heated Sqft: 2,528 - 5,893 | Total Sqft: 3,491 - 7,839

*Floor plan dimensions are approximate. Floor plans have an extensive list of structural options for further personalization.



FIRST FLOOR
Included Elevation A



SECOND FLOOR
Included Elevation A

Explore
EVERY DETAIL



Optional Elevation C

The Kingfisher

Beds: 3 - 7 | Baths: 2.5 - 7 |
Heated Sqft: 2,566 - 5,750 | Total Sqft: 3,531 - 7,514

*Floor plan dimensions are approximate. Floor plans have an extensive list of structural options for further personalization.



FIRST FLOOR
Included Elevation A



SECOND FLOOR
Included Elevation A

Uncover
THE POSSIBILITIES

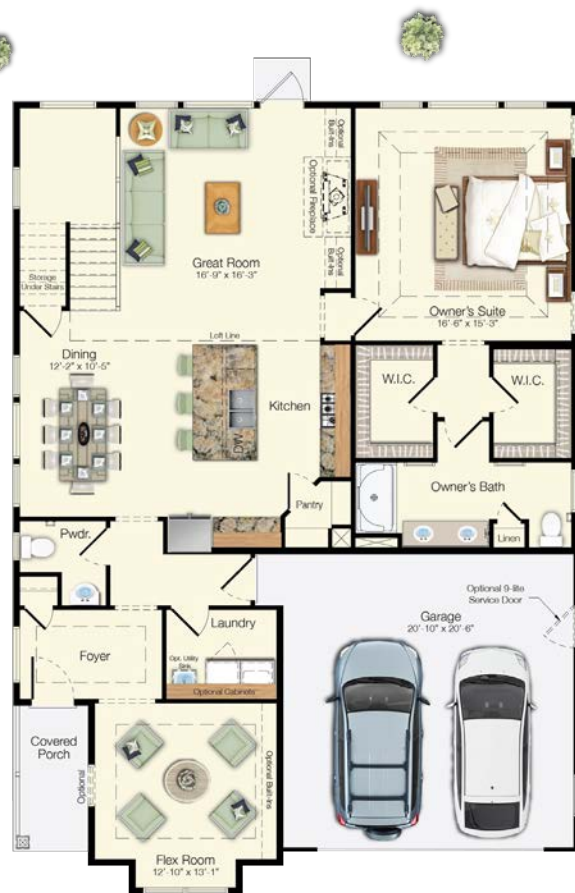


Optional Craftsman Elevation

The Southport

Beds: 4 - 6 | Baths: 2.5 - 4.5 |
Heated Sqft: 2,720 - 5,210 | Total Sqft: 3,554 - 6,550

*Floor plan dimensions are approximate. Floor plans have an extensive list of structural options for further personalization.



FIRST FLOOR
Included Elevation A



SECOND FLOOR
Included Elevation A

Explore
EVERY DETAIL



Optional Craftsman Elevation

The Shearwater

Beds: 3 - 6 | Baths: 2.5 - 6 |
Heated Sqft: 3,020 - 6,280 | Total Sqft: 3,990 - 8,082

*Floor plan dimensions are approximate. Floor plans have an extensive list of structural options for further personalization.



FIRST FLOOR
Included Elevation A



SECOND FLOOR
Included Elevation A



WANT MORE INFORMATION?

For more information visit schellbrothers.com or
contact our Sales Team!



LOUIS HOLSTEIN

(615) 912-0980

louis.holstein@schellbrothers.com

“Not only is Schell Brothers a first-rate home construction company but it is also a great place to work as is evident by everyone we interacted with. And it’s a business who is committed to our community.”

- Douglas & Jenny Kleintop

Explore
EVERY DETAIL

