



INSPIRADO



GET TO KNOW INSPIRADO!

WHY INSPIRADO?

Located on the rim above the historic Oregon Trail, looking north with the Boise River and the City of Star, Idaho sits the community of Inspirado. Inspirado is a thoughtfully designed new community in Star, Idaho, blending luxury living, recreational amenities, and beautiful open spaces.

WHAT ARE THE AMENITIES?

Residents will enjoy over 10 acres of open space, including more than 3.5 acres of usable park areas. Two main amenity centers will serve as gathering spots for neighbors and friends, offering a sparkling community pool, pickleball and bocce ball courts, a children's playground with tot lot, shaded picnic areas, and scenic walking paths that connect throughout the neighborhood. Additional features include a welcoming entrance monument with a water feature, three tranquil ponds, and a pocket park along the community's southern hillside and wetland area.

HOW MANY HOMES ARE IN THE COMMUNITY?

This community will offer 191 residential lots.

WHAT FLOOR PLANS ARE OFFERED AT INSPIRADO?

Inspirado offers a variety of single-family floor plans starting at 1,866 heated square feet. Our floor plans range from 3 to 8 bedrooms and 2 to 6.5 bathrooms, and have ample storage space. Each home offers something different. Whether you're looking for a single-story home, a flex space, a second primary suite, or a place to entertain friends and family, we have the right home to fit your needs.

WHAT'S INCLUDED IN THE HOA BENEFITS AND WHAT ARE THE FEES?

Inspirado's HOA dues are \$600 per quarter with a \$1,500 set up fee and include community landscape, irrigation and amenities.

WHO ARE THE UTILITY COMPANIES?

Natural Gas - Intermountain Gas
Electric - Idaho Power
Water and Sewer - Meridian City

WHAT SCHOOL DISTRICT IS LEGACY LOCATED IN?

Inspirado is in the West Ada School District, which includes Pleasant View Elementary, Star Junior High, Owyhee High School. Contact the West Ada School District for the most up-to-date school zoning information.

SITE PLAN



■ AVAILABLE
 ■ SOLD
 ■ MODEL HOMES
 ■ QUICK MOVE-IN

The site plan is for illustrative purposes only and is subject to change without notice. Please contact the County Planning and Zoning Office for the most current information. Homesite premiums may apply.



LEARN MORE



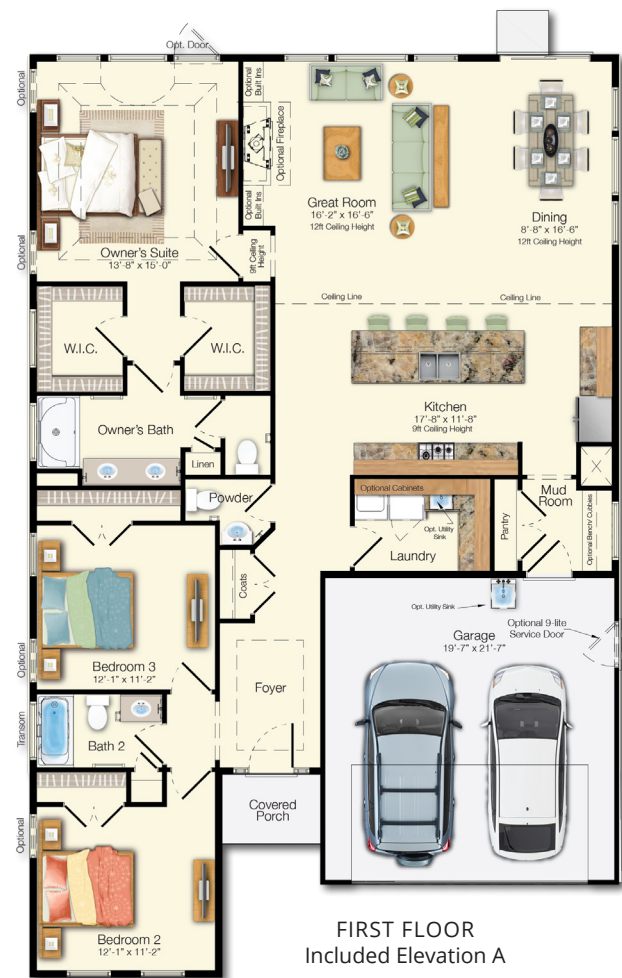
Optional Elevation B

The Monterey

Beds: 3 - 6 | Baths: 2.5 - 4
Heated Sqft: 1,866 - 5,560 | Total Sqft: 2,315 - 6,584

Three Car Garage Included

*Floor plan dimensions are approximate. Floor plans have an extensive list of structural options for further personalization.



FIRST FLOOR
Included Elevation A

LEARN MORE



Included Elevation A with Three Car Garage

The Stonefield

Beds: 3 - 6 | Baths: 3 - 6
Heated Sqft: 2,082 - 4,819 | Total Sqft: 2,543 - 6,723

Three Car Garage Included

*Floor plan dimensions are approximate. Floor plans have an extensive list of structural options for further personalization.



FIRST FLOOR
Included Elevation A

LEARN MORE



Optional Elevation B with Three Car Garage

The Cassidy

Beds: 4 - 6 | Baths: 3.5 - 7
Heated Sqft: 2,528 - 5,893 | Total Sqft: 3,491 - 7,839

*Floor plan dimensions are approximate. Floor plans have an extensive list of structural options for further personalization.



FIRST FLOOR
Included Elevation A

LEARN MORE



Optional Modern Farmhouse Elevation

The Coronado

Beds: 4 - 6 | Baths: 3.5 - 5.5
Heated Sqft: 3,316 - 4,246 | Total Sqft: 4,173 - 5,014

Three Car Garage Included

*Floor plan dimensions are approximate. Floor plans have an extensive list of structural options for further personalization.



FIRST FLOOR
Included Elevation A



SECOND FLOOR
Included Elevation A

LEARN MORE



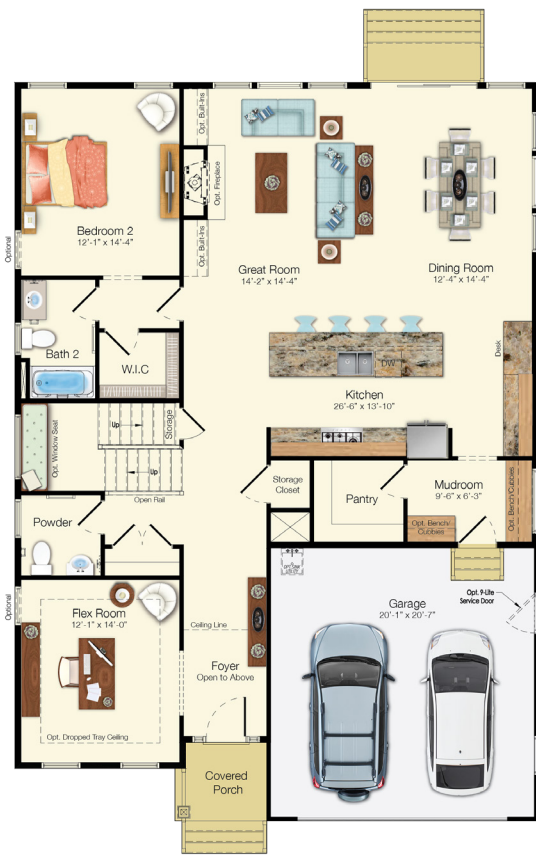
Optional Elevation A with Three Car Garage

The Astoria

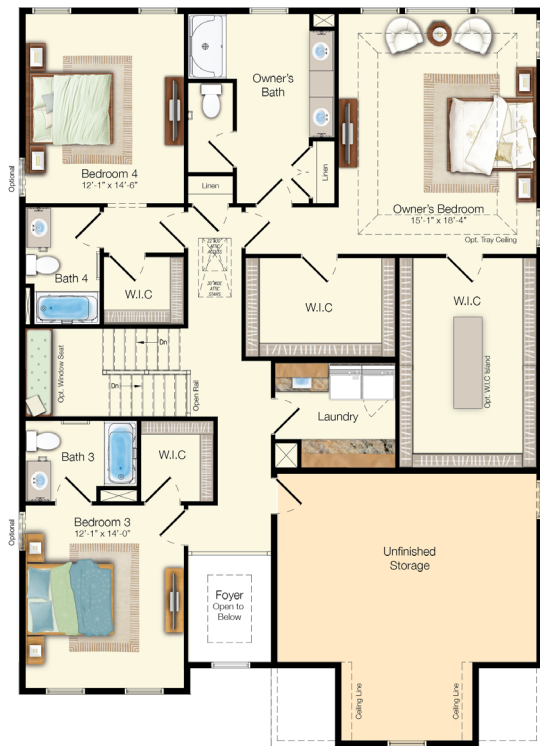
Beds: 4 - 5 | Baths: 4.5 - 6
Heated Sqft: 3,392 - 4,169 | Total Sqft: 4,225 - 5,082

Three Car Garage Included

*Floor plan dimensions are approximate. Floor plans have an extensive list of structural options for further personalization.



FIRST FLOOR
Included Elevation A



SECOND FLOOR
Included Elevation A

LEARN MORE



Optional Farmhouse Elevation

The Jameson

Beds: 3 - 8 | Baths: 2.5 - 6.5
Heated Sqft: 2,679 - 5,692 | Total Sqft: 4,124 - 8,457

*Floor plan dimensions are approximate. Floor plans have an extensive list of structural options for further personalization.



FIRST FLOOR
Included Elevation A

SECOND FLOOR
Included Elevation A



LEARN MORE



The Chesapeake

Beds: 4 - 7 | Baths: 3 - 6.5
 Heated Sqft: 3,383 - 7,004 | Total Sqft: 4,430 - 9,648

*Floor plan dimensions are approximate. Floor plans have an extensive list of structural options for further personalization.



FIRST FLOOR
 Included Elevation A



SECOND FLOOR
 Included Elevation A



Want more information?

For more information visit schellbrothers.com or
contact our Sales Team!



ALYSSA HAVENS

(208) 435-7382

Alyssa.Havens@SchellBrothers.com



JOSH STONE

(208) 379-4750

Josh.Stone@SchellBrothers.com



LUCY BIRD

(208) 247-5889

Lucy.Bird@SchellBrothers.com

“Not only is Schell Brothers a first-rate home construction company but it is also a great place to work as is evident by everyone we interacted with. And it's a business who is committed to our community.”

- Douglas & Jenny Kleintop

LEARN MORE

