



SENECA

SPRINGS



Get to know Seneca Springs

WHY SENECA SPRINGS?

Seneca Springs, located in Star, Idaho, is nestled in a peaceful setting. This private enclave of just 12 homesites offers the perfect blend of space, privacy, and versatility. What's more, homesites are large enough to have ample yards, as well as the option to build an RV garage.

HOW MANY HOMES ARE IN THE COMMUNITY?

Once completed, Seneca Springs will have 12 homes.

WHAT FLOOR PLANS ARE OFFERED AT SENECA SPRING?

At Seneca Springs, you'll find a variety of single-family floor plans ranging from 1,866 to 5,560 heated square feet. Most of our floor plans range from 3-6 bedrooms and 2-5 bathrooms based on personalized selections. Each home offers something different; whether you're looking for a first-floor or second-floor primary suite, a single-story home, or a place to entertain friends and family, we have the right home to fit your needs.



WHAT'S INCLUDED IN THE HOA BENEFITS AND WHAT ARE THE FEES?

Seneca Springs' HOA dues are \$660 a year and include community landscape, and irrigation water.

WHO ARE THE UTILITY COMPANIES?

Natural Gas - Intermountain Gas

Electric - Idaho Power

Water - Star Water

Sewer - Star Sewer

WHAT SCHOOL DISTRICT IS SENECA SPRINGS LOCATED IN?

Seneca Springs is in the West Ada School District, which includes Star Elementary School, Star Middle School, and Eagle High School. Contact the West Ada School District for the most up-to-date school zoning information.

Site Plan

HOMES STARTING AT 700K'S



The site plan is for illustrative purposes only and is subject to change without notice. Please contact the County Planning and Zoning Office for the most current information. Homesite premiums may apply.

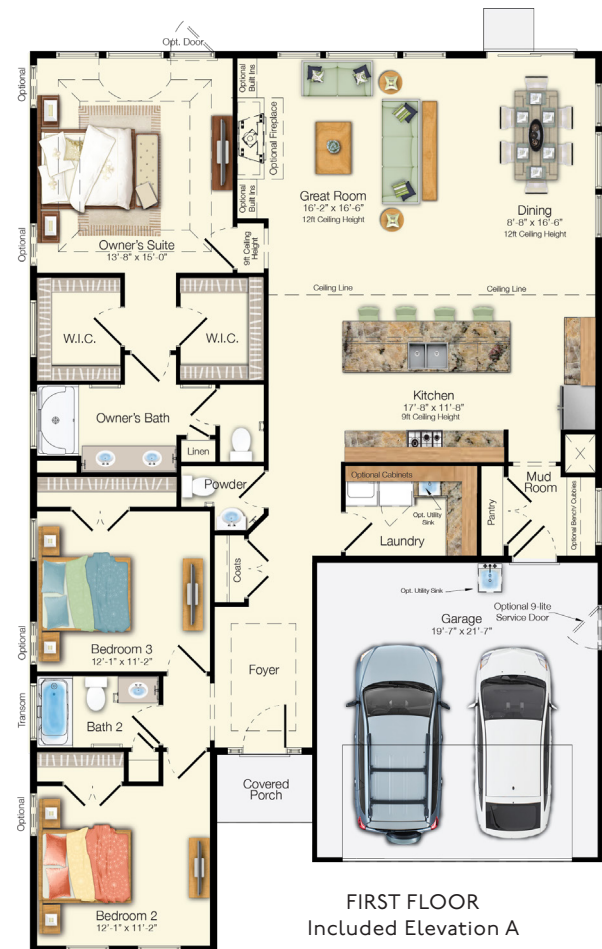
Explore
EVERY DETAIL



Optional Craftman Style

The Monterey

Beds: 3 - 6 | Baths: 2.5 - 4
Heated Sqft: 1,866 - 5,560 | Total Sqft: 2,315 - 6,584



FIRST FLOOR
Included Elevation A

THREE CAR GARAGE INCLUDED

*Floor plan dimensions are approximate. Floor plans have an extensive list of structural options for further personalization.

RANCH

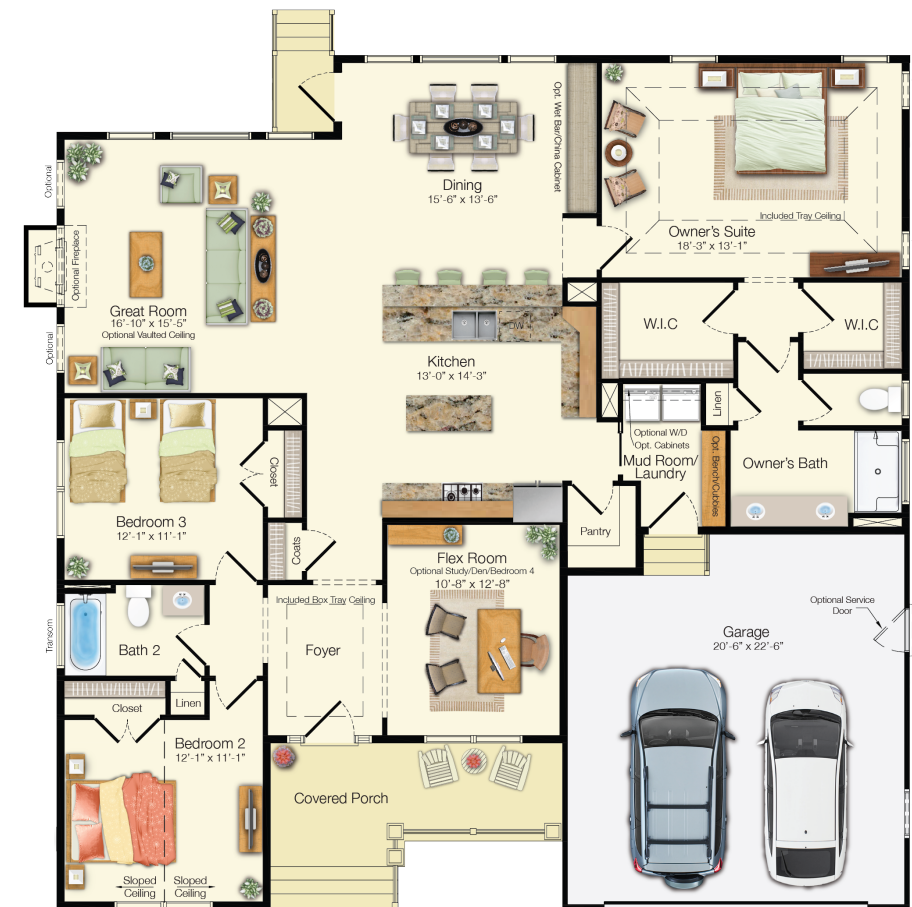
Explore
EVERY DETAIL



Included Elevation A

The Whimbrel

Beds: 3 - 6 | Baths: 2 - 4
Heated Sqft: 1,971 - 5,204 | Total Sqft: 2,544 - 6,812



FIRST FLOOR
Included Elevation A

*Floor plan dimensions are approximate. Floor plans have an extensive list of structural options for further personalization.

Uncover
THE POSSIBILITIES

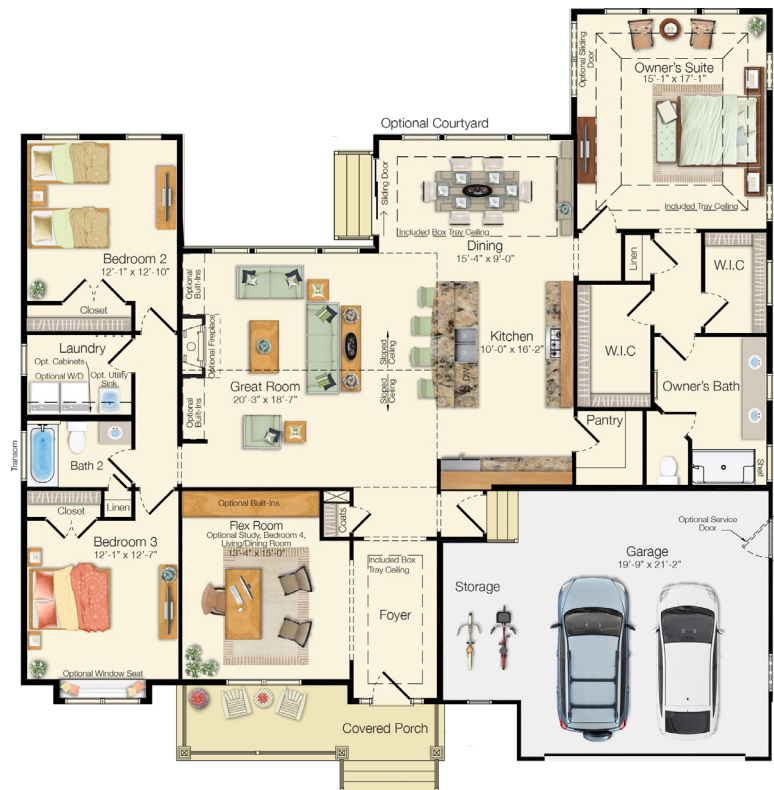


RANCH

Included Elevation A

The Mayberry

Beds: 3 - 6 | Baths: 2 - 5.5
Heated Sqft: 2,266 - 5,546 | Total Sqft: 2,925 - 7,406



FIRST FLOOR
Included Elevation A

*Floor plan dimensions are approximate. Floor plans have an extensive list of structural options for further personalization.

Uncover
THE POSSIBILITIES



Included Elevation A

The Stonefield

Beds: 3 - 6 | Baths: 3 - 6
Heated Sqft: 2,082 - 5,417 | Total Sqft: 2,562 - 6,747



FIRST FLOOR
Included Elevation A

*Floor plan dimensions are approximate. Floor plans have an extensive list of structural options for further personalization.

Uncover
THE POSSIBILITIES



RANCH

Included Elevation A

The Cassidy

Beds: 4 - 6 | Baths: 3.5 - 6.5
Heated Sqft: 2,478 - 5,799 | Total Sqft: 3,439 - 8,194



FIRST FLOOR
Included Elevation A

*Floor plan dimensions are approximate. Floor plans have an extensive list of structural options for further personalization.

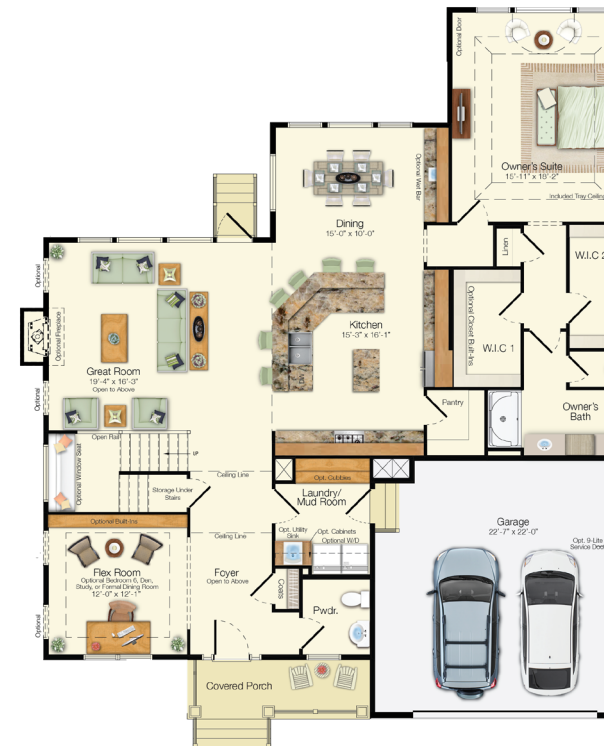
Explore
EVERY DETAIL



Optional Craftsman Elevation

The Shearwater

Beds: 3 - 6 | Baths: 2.5 - 6
Heated Sqft: 3,020 - 6,280 | Total Sqft: 3,990 - 8,082



FIRST FLOOR
Included Elevation A



SECOND FLOOR
Included Elevation A

*Floor plan dimensions are approximate. Floor plans have an extensive list of structural options for further personalization.

Explore
EVERY DETAIL



Optional Farmhouse Elevation

The Jameson

Beds: 3 - 8 | Baths: 2.5 - 6.5
Heated Sqft: 2,705 - 6,269 | Total Sqft: 4,123 - 7,765



FIRST FLOOR
Included Elevation A



SECOND FLOOR
Included Elevation A

*Floor plan dimensions are approximate. Floor plans have an extensive list of structural options for further personalization.

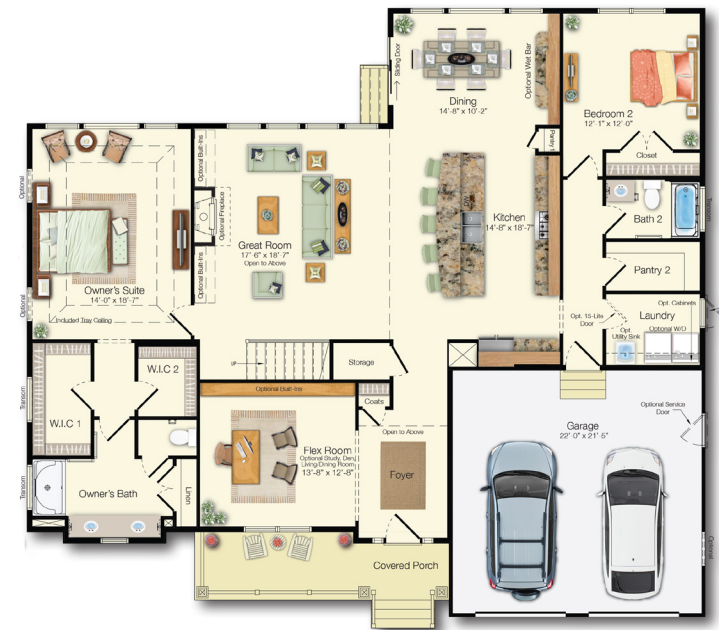
Uncover
THE POSSIBILITIES



Optional Elevation D

The Chesapeake

Beds: 4 - 7 | Baths: 3 - 6.5
Heated Sqft: 3,383 - 7,004 | Total Sqft: 4,430 - 9,648



FIRST FLOOR
Included Elevation A



SECOND FLOOR
Included Elevation A

*Floor plan dimensions are approximate. Floor plans have an extensive list of structural options for further personalization.

WANT MORE INFORMATION?

For more information visit schellbrothers.com or
contact our Sales Team!



ALYSSA HAVENS

Schell Brothers Boise
(208) 435-7382

Alyssa.Havens@SchellBrothers.com



JOSH STONE

Schell Brothers Boise
(208) 379-4750

Josh.Stone@SchellBrothers.com



LUCY BIRD

Schell Brothers Boise
(208) 247-5889

Lucy.Bird@SchellBrothers.com

“Schell builds an outstanding, high-quality home but it is your people who are the reason why Schell Brothers succeeds.”

- Mike and Jeanine

Explore
EVERY DETAIL



© 2025 Schell Brothers LLC. All Rights Reserved. Renderings are an artist's conception and are for illustrative purposes only. Floor plans have an extensive list of structural options for further personalization. All information is subject to change without notice. Equal Housing Opportunity. Schell Brothers Realty. Contractors License #6861267

