



TERRA  
VIEW



# SITE PLAN

Single-family homes starting in the 900's



■ AVAILABLE   ■ SOLD   ■ MODEL HOMES   ■ QUICK MOVE-IN

The site plan is for illustrative purposes only and is subject to change without notice. Please contact the County Planning and Zoning Office for the most current information. Homesite premiums may apply.

## GET TO KNOW TERRA VIEW

### WHY TERRA VIEW?

Terra View, located in picturesque Eagle, Idaho, spans 500 acres of unspoiled natural beauty, including multiple ponds. With its resort-style amenities, including a clubhouse, pool, and parks, this community offers a unique opportunity to live in harmony with nature, just a short drive from downtown Eagle and Star and just off the Highway 16 corridor. Terra View offers the rare ability to build basements on select homesites.

### WHAT ARE THE AMENITIES?

Terra View feature unrivaled amenities such as a large community clubhouse with kitchen and pool, a large city park with lively splash pad, covered pavilions and lush, intricately designed landscaping.

### HOW MANY HOMES ARE IN THE COMMUNITY?

Once completed, Terra View will have 395 homes.

### WHAT FLOOR PLANS ARE OFFERED AT TERRA VIEW?

At Terra View, you'll find a variety of single-family floor plans ranging from 1,866 to 6,280 heated square feet. Our floor plans range from 3-7 bedrooms and 2-7 bathrooms based on personalized selections and optional basements. Each home offers something different; whether you're looking for a single-story home, a flex space, a theatre room, or a place to entertain friends and family, we have the right home to fit your needs.

### WHAT'S INCLUDED IN THE HOA BENEFITS AND WHAT ARE THE FEES?

Terra View's HOA fee is \$233 a month and includes: common area maintenance such as ponds, fountains, landscaping, streets, sidewalks, mailbox station, streetlights, and the use of all amenities.

### WHO ARE THE UTILITY COMPANIES?

Natural Gas - Intermountain Gas  
Electric - Idaho Power  
Water -Veolia Water  
Sewer - City of Eagle

### WHAT SCHOOL DISTRICT IS TERRA VIEW LOCATED IN?

Terra View is in the West Ada School District, which includes Eagle Hills Elementary School, Star Middle School, and Eagle High School. Contact the West Ada School District for the most up-to-date school zoning information.



SCAN  
for more info  
and pricing

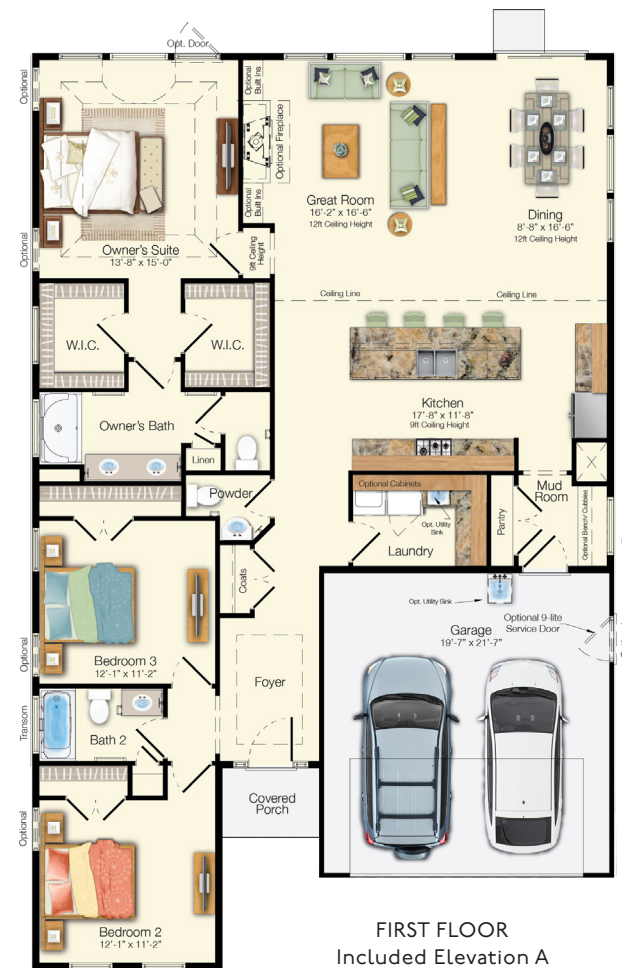


RANCH

Optional Elevation A with RV Garage

## The Monterey

Beds: 3 - 6 | Baths: 2.5 - 4  
Heated Sqft: 1,866 - 5,560 | Total Sqft: 2,315 - 6,584



THREE CAR GARAGE INCLUDED

\*Floor plan dimensions are approximate. Floor plans have an extensive list of structural options for further personalization.

RANCH



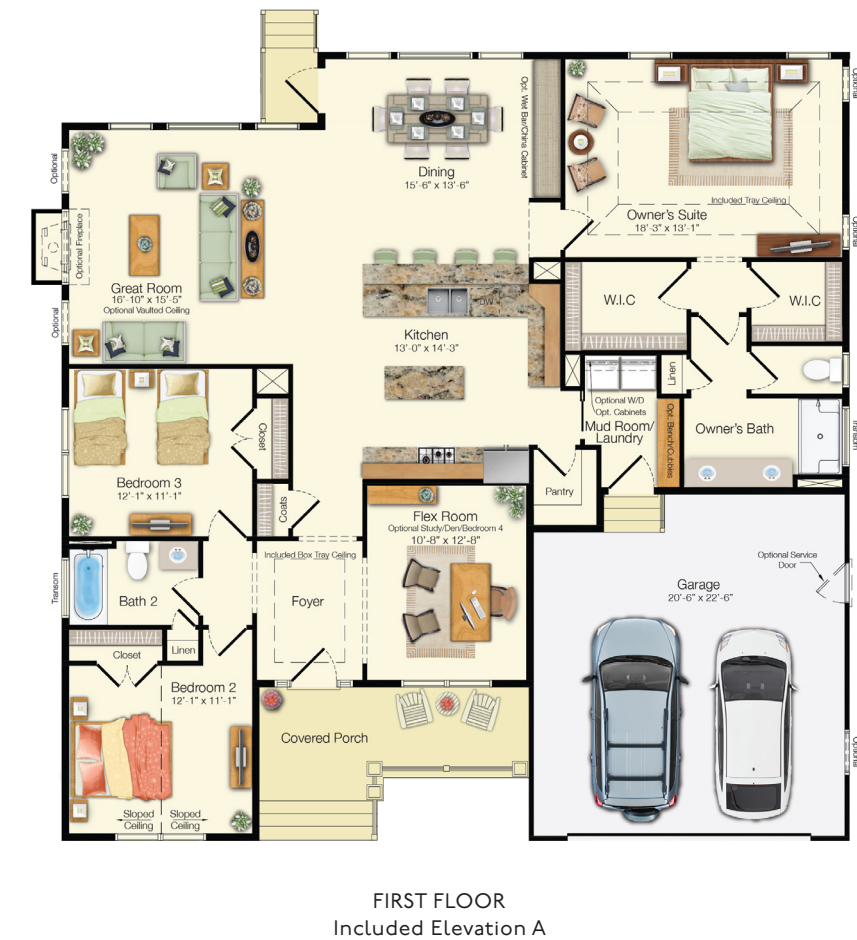
SCAN  
for more info  
and pricing



Optional Elevation A

## The Whimbrel

Beds: 3 - 6 | Baths: 2 - 4  
Heated Sqft: 1,971 - 5,204 | Total Sqft: 2,544 - 6,812



\*Floor plan dimensions are approximate. Floor plans have an extensive list of structural options for further personalization.

SCAN  
for more info  
and pricing

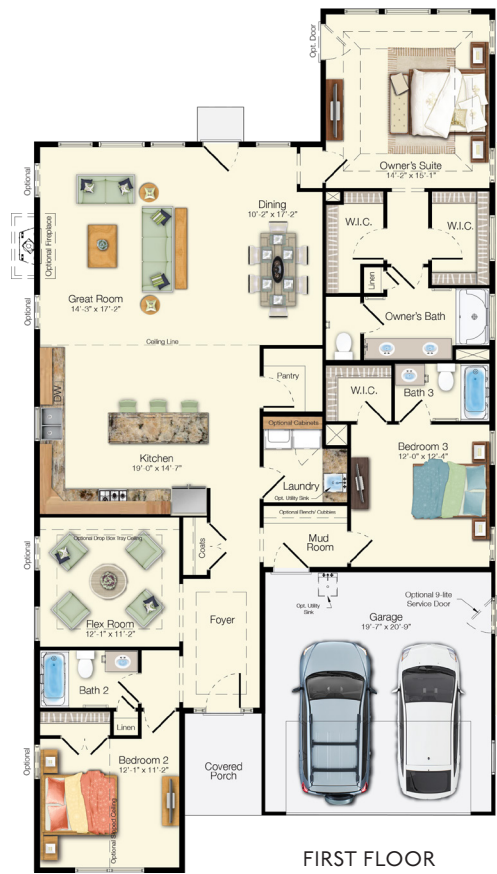


RANCH

Included Elevation A

## The Stonefield

Beds: 3 - 6 | Baths: 3 - 6  
Heated Sqft: 2,082 - 5,417 | Total Sqft: 2,562 - 6,747



FIRST FLOOR  
Included Elevation A

THREE CAR GARAGE INCLUDED

\*Floor plan dimensions are approximate. Floor plans have an extensive list of structural options for further personalization.

SCAN  
for more info  
and pricing

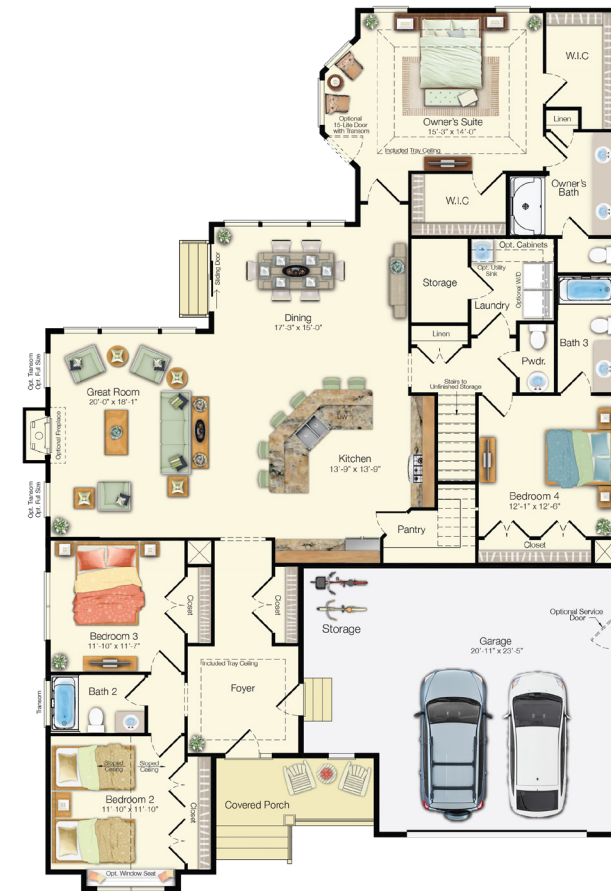


RANCH

Included Elevation A

## The Cassidy

Beds: 4 - 6 | Baths: 3.5 - 6.5  
Heated Sqft: 2,478 - 5,799 | Total Sqft: 3,439 - 8,194



FIRST FLOOR  
Included Elevation A

\*Floor plan dimensions are approximate. Floor plans have an extensive list of structural options for further personalization.

SCAN  
for more info  
and pricing



Optional Modern Farmhouse Elevation

## The Coronado

Beds: 4 - 7 | Baths: 3.5 - 6.5  
Heated Sqft: 3,338 - 5,988 | Total Sqft: 4,195 - 7,209



FIRST FLOOR  
Elevation A



SECOND FLOOR  
Elevation A

SCAN  
for more info  
and pricing



Optional Craftsman Elevation

## The Shearwater

Beds: 3 - 6 | Baths: 2.5 - 6  
Heated Sqft: 3,020 - 6,280 | Total Sqft: 3,990 - 8,082



FIRST FLOOR  
Included Elevation A



SECOND FLOOR  
Included Elevation A

THREE CAR GARAGE INCLUDED

\*Floor plan dimensions are approximate. Floor plans have an extensive list of structural options for further personalization.

\*Floor plan dimensions are approximate. Floor plans have an extensive list of structural options for further personalization.

# PERSONALIZED FLOOR PLANS

Our floor plans break the mold by enhancing the areas that are most important, increasing functionality and eliminating wasted space. From the outdoor living space to the interior finishes, you'll love that every detail is planned with livability in mind.

Our floor plans are born from years of research and customer feedback. As a result, we have a diverse collection of functional floor plans accentuated by extensive personalization and aesthetic appeal. Our unique floor plans are constantly evolving and include everything today's home buyer wants and needs.



## WANT MORE INFORMATION?

For more information visit [schellbrothers.com](https://schellbrothers.com) or  
contact our Sales Team!



**ALYSSA HAVENS**

Schell Brothers Boise  
(208) 435-7382

[Alyssa.Havens@SchellBrothers.com](mailto:Alyssa.Havens@SchellBrothers.com)



**JOSH STONE**

Schell Brothers Boise  
(208) 379-4750

[Josh.Stone@SchellBrothers.com](mailto:Josh.Stone@SchellBrothers.com)



**LUCY BIRD**

Schell Brothers Boise  
(208) 247-5889

[Lucy.Bird@SchellBrothers.com](mailto:Lucy.Bird@SchellBrothers.com)

“Schell designs are gorgeous and the quality control is superior. We were met with smiles and professionalism every step of the way.”

-Dawn and Roger

**SCAN**  
for more info  
and pricing

